



Expected hours of work  
 - CHILLIWACK: 7AM - 5PM, Monday - Saturday, with the following exceptions:  
 - Narrow environmental / regulatory windows. A noise exemption permit will be required.  
 Night work traffic control provisions  
 • A portable dynamic message sign (PDMS) is required for night work operations on one-way roads. PDMSs installed on the road will alert motorists to the work activities occurring ahead e.g. flag preparation.

STORAGE NOT REQUIRED

LEGEND:  
 4 SIGN MARKER  
 AUTOMATED FLAGGER ASSISTANCE DEVICE (AFAD)  
 TCP CONTROL LOCATION  
 ACCESS (6B-A-UNSWORTH RD-A&B)

0 43.75m 87.5m 175m

DESIGNED: DRAWN: CHECKED: APRVD: 1:3,500  
 PN PN PN KM KM

DESIGN SPEED: 50 km/h

PROJECT NO: 3431.B01  
 DRAWINGS NO: 6B-A-UNSWORTH-A&B\_P2

DATE: JAN 17, 2023  
 REVISION: 1

0 ISSUED FOR IMPLEMENTATION JAN 17-23  
 1 ISSUED FOR IMPLEMENTATION JAN 27-23

SEAL:  
 PERMIT TO PRACTICE  
 WATT CONSULTING GROUP LTD  
 SIGNATURE \_\_\_\_\_  
 DATE \_\_\_\_\_  
 PERMIT NUMBER: 1001432  
 ENGINEERS & GEOSCIENTISTS  
 BRITISH COLUMBIA

NOTE DIMENSIONS SHOWN ARE SITE SPECIFIC

GROSS SECTION A  
 M.T.S.

NOTE DIMENSIONS SHOWN ARE SITE SPECIFIC

GROSS SECTION B  
 M.T.S.

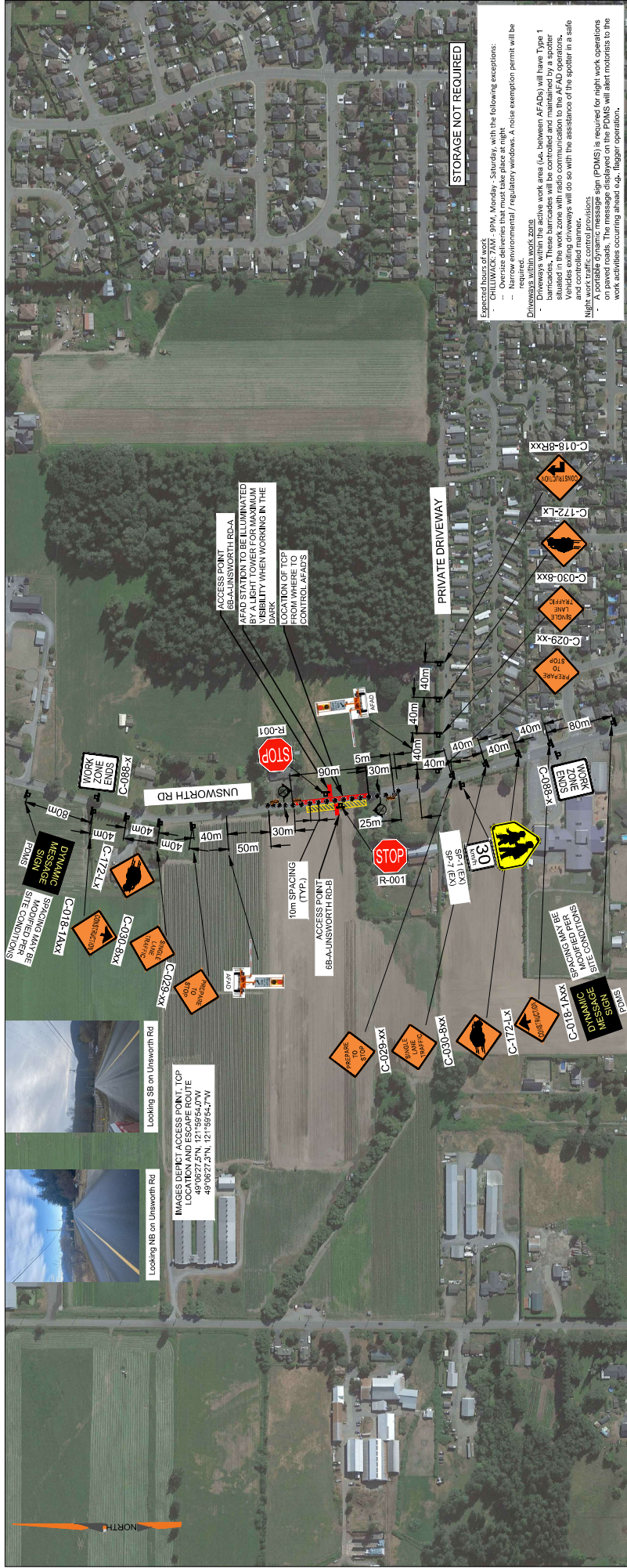
NOTE DIMENSIONS SHOWN ARE SITE SPECIFIC

PLAN VIEW  
 M.T.S.

NOTE DIMENSIONS SHOWN ARE SITE SPECIFIC



IMAGES DEPICT ACCESS POINT, TCP LOCATION AND ESCAPE ROUTE  
 49°06'27.5"N, 121°58'54.0"W  
 49°06'27.5"N, 121°58'54.0"W



IMAGES DEPICT ACCESS POINT, TCP LOCATION AND ESCAPE ROUTE  
 49°06'27.5"N, 121°58'54.0"W  
 49°06'27.5"N, 121°58'54.0"W

These Design Documents are prepared solely for the use by the party with whom the Design Professional has entered into a contract, and there are no representations of any kind made by the Design Professional to any party with whom the Design Professional has not entered into a contract.

- STORAGE NOT REQUIRED**
- Express delivery of signs
  - CHILLIWACK 7A02, 8PM, Monday - Saturday, with the following exceptions:
    - Over-size deliveries that must take place at night
    - Narrow environmental / regulatory windows. A noise exemption permit will be required for these deliveries.
  - Driveways within the active work area (i.e. between AFADs) will have Type 1 barricades. These barricades will be controlled and maintained by a spotter stationed in the work zone with radio communication to the AFAD operators. The spotter will go with the assistance of the operator in a safe and controlled manner.
  - A portable dynamic message sign (PDMS) is required for night work operations in the work zone. PDMS will alert motorists to the work activities occurring ahead up-bagger operations.

- LEGEND:**
- 4 SIGN MARKER
  - AUTOMATED FLAGGER ASSISTANCE DEVICE (AFAD)
  - TCP CONTROL LOCATION
  - ACCESS (6B-A-UNSWORTH RD-A&B)
  - TYPE 1 BARRICADE

**TITLE:** TRAFFIC CONTROL LAYOUT  
 AP 6B-A-UNSWORTH RD-A&B-SLAT  
 BPLP TMEP SPREAD 6B

**DESIGNED:** DRAWN: CHECKED: APPROVED: [Blank]

**DESIGN SPEED:** 50 km/h

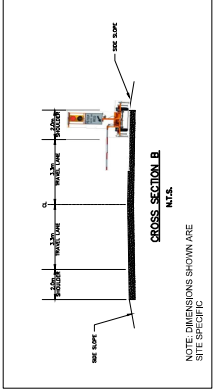
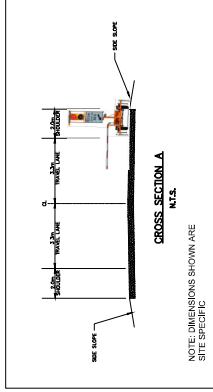
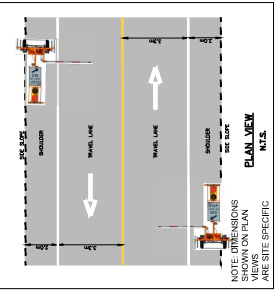
**PROJECT NO.:** 3431.B01

**DRAWING NO.:** 6B-A-UNSWORTH-A&B-SLAT\_P2

**DATE:** JAN 18, 2023

**REVISION:** 2

**WATT Consulting Group**  
 Calgary, Edmonton, Lloydminster, Okanagan, Vancouver, Victoria  
 WATTCONSULTINGGROUP.COM

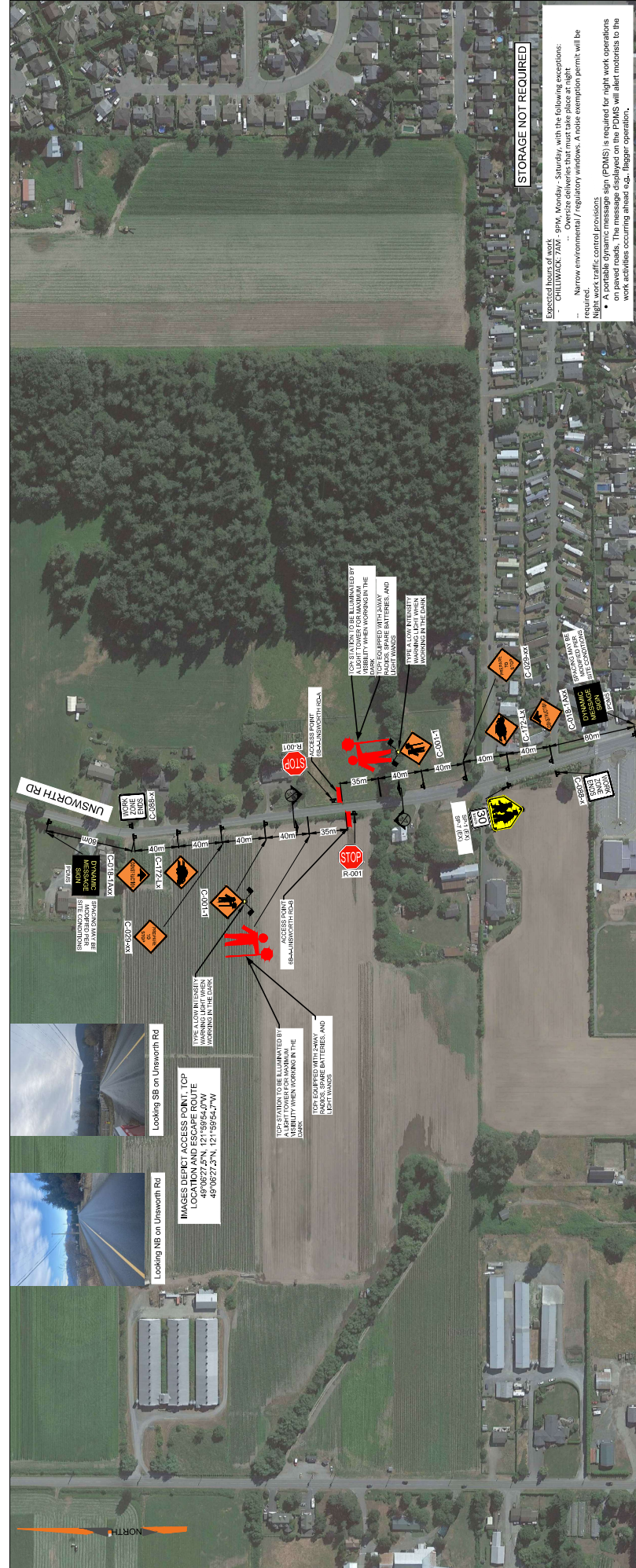


**SEAL:**

**PERMIT TO PRACTICE**  
 WATT CONSULTING GROUP LTD  
 SIGNATURE \_\_\_\_\_  
 DATE \_\_\_\_\_

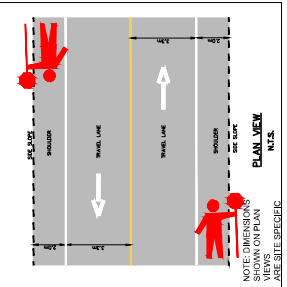
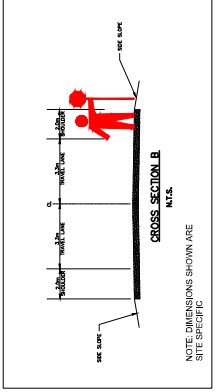
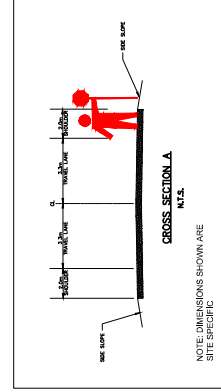
**PERMIT NUMBER: 1001432**  
 ENGINEERS & GEOSCIENTISTS  
 BRITISH COLUMBIA

REVISIONS	ISSUED FOR IMPLEMENTATION	JAN 18-23
0	ISSUED FOR IMPLEMENTATION	JAN 18-23
1	ISSUED FOR IMPLEMENTATION	JAN 24-23
2	ISSUED FOR IMPLEMENTATION	JAN 27-23
3		
4		
5		
6		
7		
8		



PERMIT TO PRACTICE  
 WATT CONSULTING GROUP LTD  
 SIGNATURE \_\_\_\_\_  
 DATE 1001432  
 ENGINEERS & GEOSCIENTISTS  
 BRITISH COLUMBIA

no representations of any kind made by the Design Professional for the use by any party with whom the Design Professional has entered into a contract, and there are  
 These Design Documents are prepared solely for the use by the party with whom the Design Professional has entered into a contract, and there are  
 These Design Documents are prepared solely for the use by the party with whom the Design Professional has entered into a contract, and there are



**LEGEND:**

- SIGN MARKER
- TCP CONTROL LOCATION
- ACCESS (68-A-UNSWORTH RD-A&B)

**TITLE:** TRAFFIC CONTROL LAYOUT  
 AP 68-A-UNSWORTH RD-A&B-TCPr  
 BPLP TMEP SPREAD 6B

DESIGNED:	DRAWN:	CHECKED:	APPROVED:
PN	PN	KM	KM
DESIGN VEHICLE: <td colspan="3">DESIGN SPEED:</td>	DESIGN SPEED:		
PROJECT NO.:	50 km/h		
DATE:	JAN 17, 2023		
REVISION:	1		

**WATT CONSULTING GROUP**  
 Consulting Group  
 Calgary, Edmonton, Lloydminster, Okanagan, Vancouver, Victoria  
 WATTCONSULTINGGROUP.COM

REVISIONS	DATE
0 ISSUED FOR IMPLEMENTATION	JAN 17 23
1 ISSUED FOR IMPLEMENTATION	JAN 27 23
2	
3	
4	
5	
6	
7	
8	

SCALE:	DESIGNED:	DRAWN:	CHECKED:	APPROVED:
0	PN	PN	KM	KM
1	43.75m	87.5m	175m	350m
2				
3				
4				
5				
6				
7				
8				